

MATCH LINE STA. 1155+00 (SEE SHEET 10)

MATCH LINE STA. 1210+00 (SEE SHEET 12)

CURVE NGH10-2
 PI Sta 33+51.82
 D = 6° 28' 35" (RT)
 Dc = 1' 15" 00"
 T = 259.34'
 L = 518.12'
 R = 4583.66'
 DS = 70 mph
 eMAX = 0.08 ft/ft
 e = 0.0208 ft/ft

CURVE NGH10-1
 PI Sta 12+81.35
 D = 20° 52' 04" (LT)
 Dc = 3' 45" 00"
 T = 281.35'
 L = 556.47'
 R = 1527.89'
 DS = 70 mph
 eMAX = 0.08 ft/ft
 e = 0.0208 ft/ft

POT Sta 46+82.34

PT Sta 36+10.60

PC Sta 1190+4.45

PC Sta 30+92.48

S T 00° 51' E
 3,434.38

BARRINGTON CEMETERY

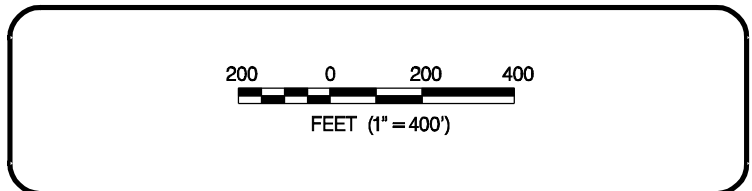
20 RICHMOND COUNTY

SCOTLAND COUNTY

PHOTOGRAPHY DATE: 2003

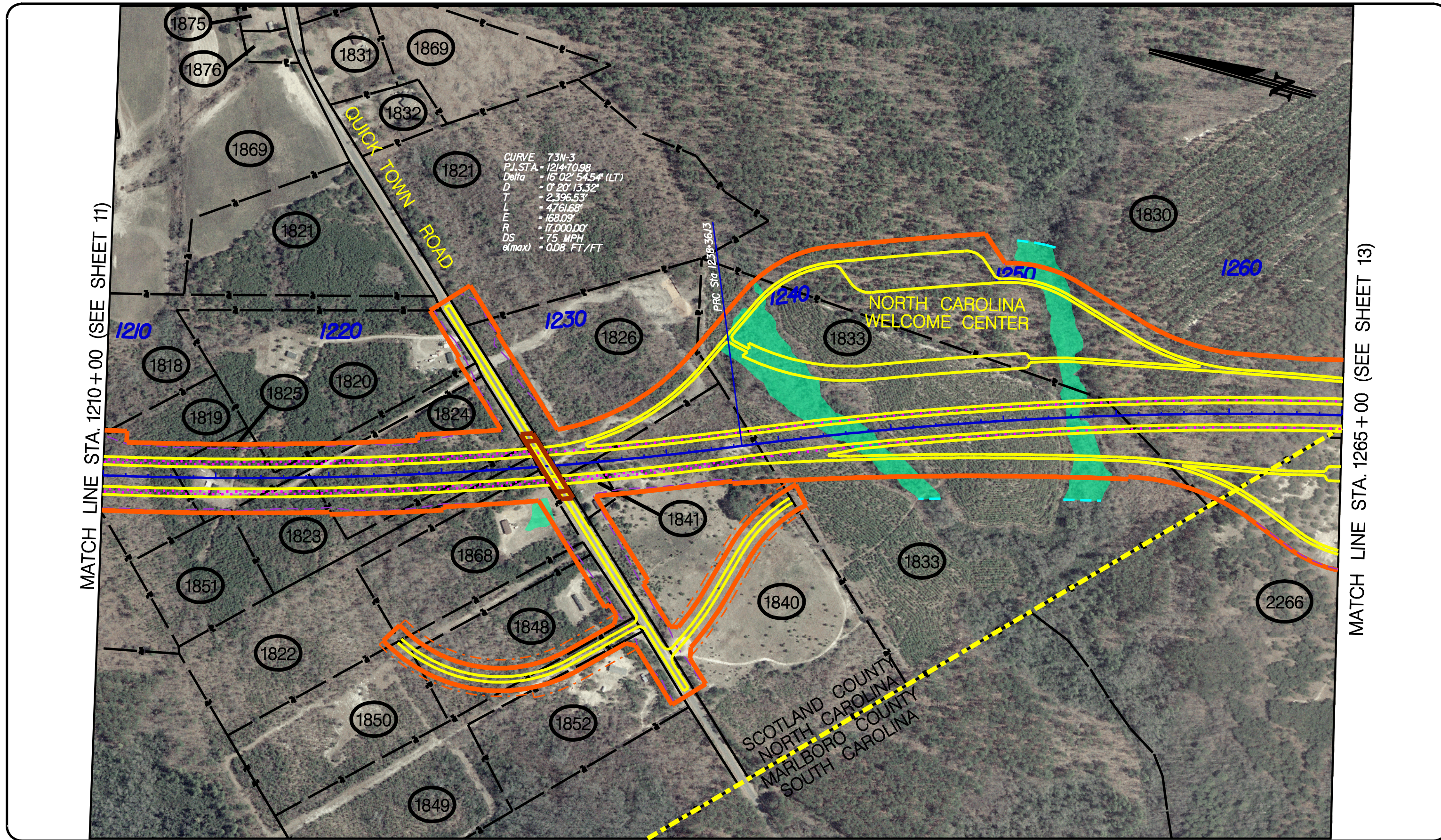
INTERSTATE 73
 MARLBORO & DILLON COUNTIES
 SOUTH CAROLINA
 RICHMOND & SCOTLAND COUNTIES
 NORTH CAROLINA

CONCEPTUAL ROADWAY PLANS
 I-73 NORTH (I-74 TO I-95)



PREFERRED ALTERNATIVE
 STA. 1155+00 TO STA. 1210+00


SHEET
 11



MATCH LINE STA. 1210+00 (SEE SHEET 11)

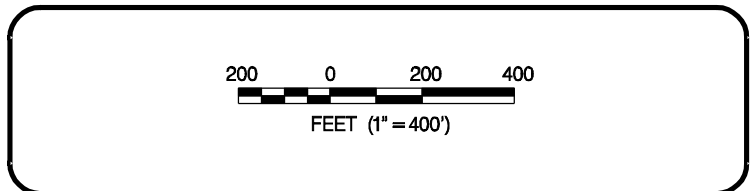
MATCH LINE STA. 1265+00 (SEE SHEET 13)

PHOTOGRAPHY DATE: 2003



INTERSTATE 73
 MARLBORO & DILLON COUNTIES
 SOUTH CAROLINA
 RICHMOND & SCOTLAND COUNTIES
 NORTH CAROLINA

CONCEPTUAL ROADWAY PLANS
 I-73 NORTH (I-74 TO I-95)



PREFERRED ALTERNATIVE
 STA. 1210+00 TO STA. 1265+00

SHEET
 12